



EUROTHERM

CONTROLS
PROCESS AUTOMATION
RECORDERS

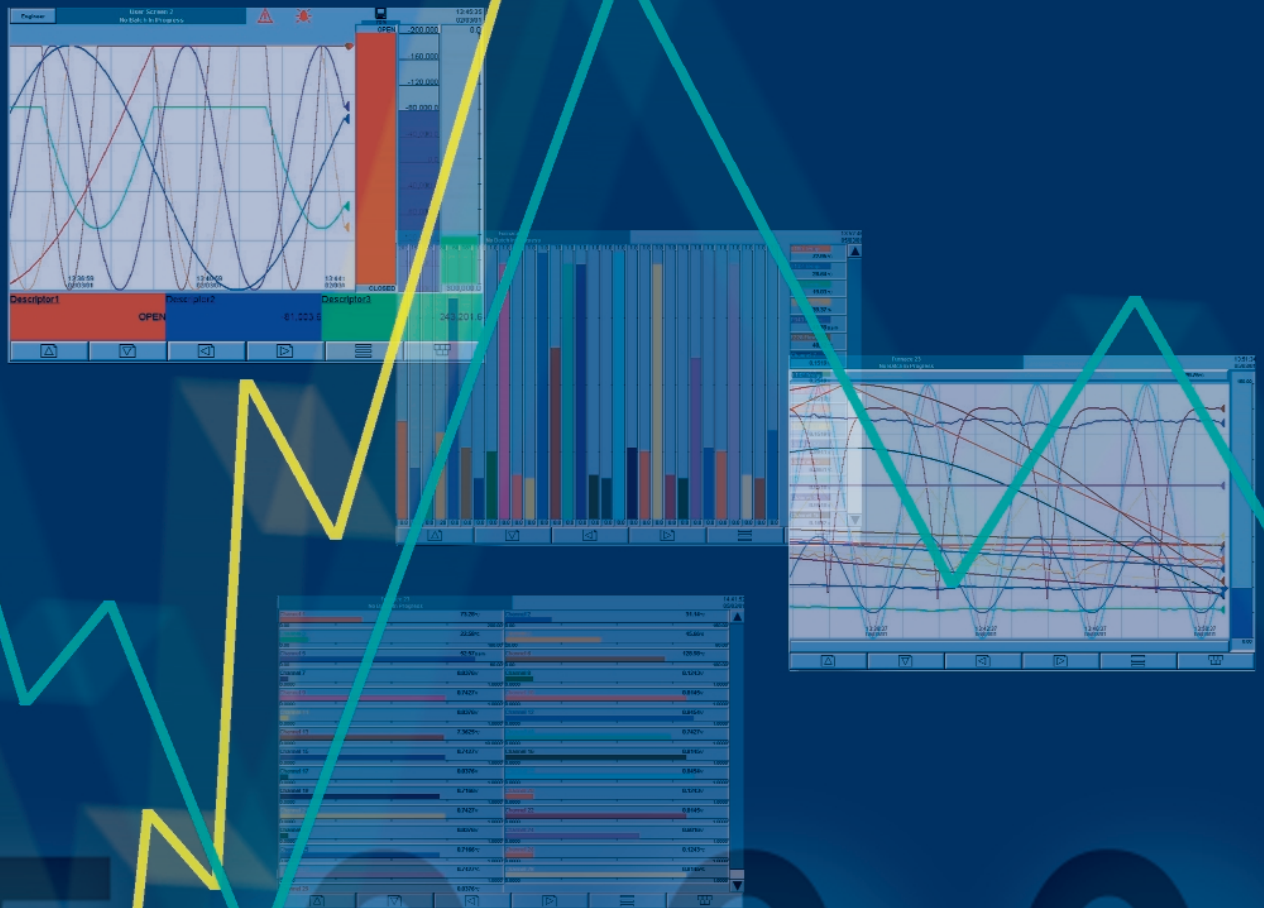
Process Data

Acquire it. Display it. Manage it.

**The Eurotherm 5000 Series
Data Management System provides
unsurpassed local and network
access to your process data**

 **invensys**
An Invensys company

Technical innovation and design excellence *means*
peerless data acquisition from Eurotherm



ETHERNET

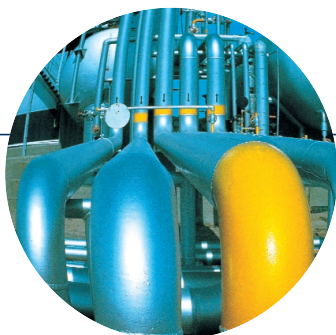
	Screen Size	Input Channels	Relay Outputs	Removable Data Storage	Ethernet Network Connection
5180V	12.1 inch	6 to 36	3 to 24	PC Card or Floppy Disk	Standard
5100V	5.5 inch	6 or 12	3 to 9	PC Card or Floppy Disk	Standard
5100e	5 inch	6	1	Floppy Disk	Standard

5000 Series – data acquisition, display – a complete data management system

Constant focus on technical innovation and design excellence gives Eurotherm a world-beating product range.

Eurotherm products are specifically designed to satisfy the needs of individual applications. This market sensitivity has helped to establish Eurotherm as the market leader in many demanding sectors.

High accuracy input measurement has always been a hallmark of Eurotherm products. The new range of equipment is designed to acquire process data and then to display, transfer and manage that data using secure yet flexible means to meet varying user needs.



RISC Internet IntranetFTP

The Series 5000 uses the very latest in RISC processor technology to give a powerful platform now and for the future. Communication via Ethernet makes it an industry standard networking tool – process data has never been so easily available while still maintaining integrity and security. This along with sophisticated graphics and archiving capability maintain Eurotherm products in the forefront of the recording industry.

The sophistication of Eurotherm products continues to grow. New features are constantly being added in response to customer needs. Our superb Research and Development team is continuously striving to improve and extend our range.

Q What benefits will Ethernet connection give me?

a *The Ethernet connection on all the 5000 series gives fast, simple and secure data acquisition – you no longer have to leave your desk to obtain live or historical data from your process. Using either your local network, Internet or dial-up connection, Bridge 5000 software allows you to view the instrument display remotely. Review software enables you to view and analyse historical data obtained via the FTP (File Transfer Protocol) feature.*

Q Traditional recording equipment would not work well with my batch process environment. How will the 5000 Series be better?

a *The 5000 Series 'V' range has the option to process data using Batch 5000 functionality. Batch 5000 is designed to help meet the requirements of FDA Title 21 CFR Part 11. Full batch information including: Operator details; Start/stop time and date, and Operator entered batch data can be viewed and reviewed on a batch by batch basis.*

Q Can I view data in a way that best shows my process?

a *The 5000 Series 'V' range has the option of Screen Builder software. Using existing components of Bargraphs, Trends and Numerics, the user can customise the screen layout. Any number of these components can be added to the 5000 display in a layout that best suits the user and the process.*

Q How can I be sure that my process data is stored without loss or tampering?

a *The 5000 Series has various archiving possibilities all of which use a proprietary tamper-proof data format. 5000 units have an internal Flash memory that will store historical data. This data can be extracted via either a PCCard, floppy disk or network to maintain your required long term records.*

File Transfer Protocol	Screen Builder	Bridge 5000 Compatible	Batch 5000
Standard	Available	Yes	Available
Standard	Available	Yes	Available
Standard	Not available	Yes	Not available

Bridge 5000

A seamless interface from the plant floor to your PC



The 5000 Series instruments have an excellent capability to be fully integrated into a network environment. Eurotherm have harnessed today's technologies to provide viewing of live data from any distance using the Bridge 5000 software. Together with the ability to remotely acquire historical data for analysis utilising FTP, the 5000 Series gives you access to all data from any PC anywhere in the world. Your data security is

maintained with the use of specific User Names and Passwords for all types of remote access. Bridge 5000, FTP and Review software can all access a networked 5000 instrument over a local network, dial-up connection or via the Internet – never has it been so easy to view and archive your process data.

Batch 5000

- Designed to enable your process to conform to FDA Title 21 CFR Part 11
- Batch specific logging of data
- Batch archive – search for a specific batch in Review software
- Operator details, time and date - logged at start and stop of a batch.
- Easy to configure to meet process specific needs

Continuous or Individual Batch

PROCESS



The 5000 Series 'V' range support the Batch 5000 option. This software enables you to enter information specific to a batch and record this with other process data. The Batch option can be configured for up to six operator entry fields. These free format fields may include data such as Batch Number, Job number, Charge number, Customer name, Product type and Order number. Batch 5000

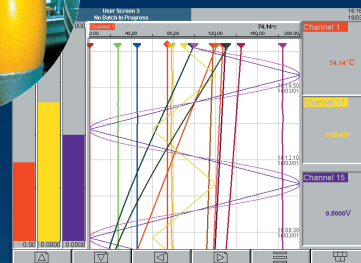
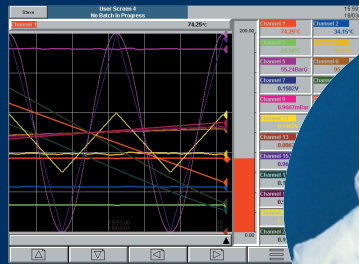
can be used in either a continuous or start/stop mode. Named user accounts can be created with individual passwords and access privileges. The operator details will be logged with the rest of the batch data on start and/or stop of batch providing traceability of operations. User accounts can also be disabled or deleted as required to maintain total security.

Screen Builder

Custom graphic screens tailored to your application needs

The 5000 Series have colour, touchscreen displays designed for ease of use and simple configuration.

We understand the need for data to be represented in the most interpretable format for the operator. The 5000 series have vertical trend, horizontal trend, vertical bar graph, horizontal bar graph and numeric standard displays. In addition, the 'V' range is available with the Screen Builder feature. Screen Builder allows you to customise up to four additional displays to best reflect the given process. Any of the standard display formats can be placed anywhere on the screen. Pictures may also be loaded into a 5000V instrument for use as a background image. This truly makes a standard product into a process specific special!



Seamless
User defined interfacing
graphic displays



Channel 12
0.9941v
Channel 13
6.3861 °C
Channel 14
0.9510
Channel 15
0.0000V

5000 Series - Data Acquisition, Display and Data Management

The 5000 Series all offer unrivalled input accuracy with a 125ms total sample rate for up to 36 input channels. All input channels are freely configurable to suit your process requirements. Each instrument has an intuitive, touchscreen display to enable operators to clearly view process data in varying formats. All have onboard Flash data storage capability, Ethernet communication and either a PCCard reader or Floppy Disk. All data is stored in a tamper-proof binary format that can be used for secure, long-term records of your process. The 5000 Series is truly designed for today's network world and can be accessed via a Local Area Network, dial-up connection, Intranet or Internet.

Seamless communications

Data Acquisition.

5180v

Display.

Management.

The 5180V is the largest of the 5000 Series, offering up to 36 input channels and 24 relay outputs. A 12.1 inch, colour, SVGA TFT touchscreen display gives unsurpassed visibility for the operator. It has either a PCCard reader or floppy disk drive as standard offering up to 260 Mbytes of data storage along with 18 Mbytes of Flash memory for data storage on board – making a powerful data storage unit.

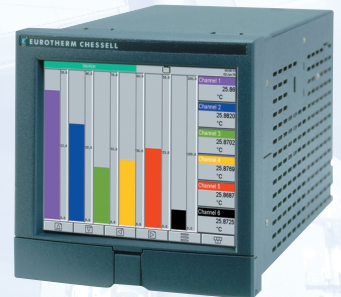


5100v

High visibility

Current and historic data sets

The 5100V offers up to 12 input channels and 12 relay outputs. It has a 5.5 inch, colour, – VGA TFT touchscreen display. It is also supplied with either a PCCard reader or floppy disk drive as standard and has 3 Mbytes of Flash memory for data storage onboard.



5100e

Universal inputs

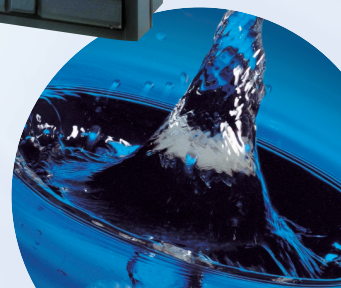
Unmatched Accuracy

The 5100e offers the software and input excellence of the 5000V products in a low cost, entry level instrument. It has 6 freely configurable input channels and a single relay output. The operator interface is via a 5 inch, colour, – VGA STN touchscreen display and is supplied with a floppy disk drive and 3 Mbytes Flash data storage on board.



125ms sample rate

Cost effective solution



5000 Series features

Display	Colour touchscreen
Environmental Protection	Bezel and display: IP65
Sample Rate	125ms parallel sampling
Inputs	dc V, dc mV, dc mA (with shunt), TCs, RTD, Contact closure

Data Archiving

The 5000 Series is designed to store and protect your process data. Initially historical data is stored in the internal, non-volatile Flash memory. This data may then be archived to the removable PCCard or Floppy Disk – these media will store data for a length of time dependant upon card size, data log rate and number of channels. Storage capacity need no longer be a concern, however, as data may be also be automatically archived to a remote server utilising the Ethernet connection.

5180V/5100V/5100e Standard Software

Review – Included with every 5000 Series

Review software is included free of charge with every 5000 Series data acquisition unit. This PC application acts as an efficient and secure library for data from which charts can be reviewed, printed and exported to other PC packages if required. Archive files from a 5000 instrument are stored in a tamper-proof binary format and Review uses this format to enable chart view on a PC – ensuring integrity of both historical and new data.

- Chart print capability
- Time compression – expand or compress longer time periods or to focus in on specific detail
- 125ms resolution
- Text messages displayed
- Data can be obtained via a network, including the Internet, or using the removable storage media from a 5000 instrument.

Configuration Editor – Included with every 5000 Series

An offline configuration editor package is included free of charge with every 5000 Series. Configurations can be created and stored on a PC and easily loaded onto a 5000 Series instrument as required.

FTP (File Transfer Protocol) – Standard on every 5000 Series

The 5000 Series instruments have FTP client and server as a standard communication protocol. FTP can be used to transfer files into Review software or as a means of obtaining any file from a 5000 instrument over a network – using either a specific FTP package or Internet Explorer.

5000 Software Options

Batch 5000 for the V Series

Log specific batch data in the 5000 Series for view and review.

Screen Builder for the V Series

Create User Screens to make a standard 5000 Series display specific to your process needs.

Bridge 5000 for the V and e Series

For use on your PC – View live process data from any PC anywhere.

Eurotherm Ltd
Faraday Close
Worthing
West Sussex
BN13 3PL

Distributed by:

Tel: +44 (0) 1903 268500
Fax: +44 (0) 1903 265982
Email: info@eurotherm.co.uk
http: www.eurotherm.co.uk

HA027125 Issue 3



EUROTHERM

CONTROLS
PROCESS AUTOMATION
RECORDERS